

# Eames Plastic Chair

Charles & Ray Eames, 1950

**vitra.**



## Eames Plastic Chair

The Eames Plastic Chairs are renewed versions of the legendary Fiberglass Chair. As the very first industrially produced plastic chair, it was originally developed by the Eameses in collaboration with Zenith Plastics for the 'Low-Cost Furniture Design' competition organised by the Museum of Modern Art. In the current versions made of polypropylene, these chairs provide even greater comfort.

The wide selection of bases makes it possible to use the chairs in a variety of settings: from the dining room or home office to the garden. Different colours and upholstery versions provide many options for combining individual chairs to meet various needs.

In 2015, Vitra adapted the seat geometry and height of the Eames Plastic Chairs to today's requirements and also expanded the selection of colours with six new shades.

The Eames Plastic Armchair is complemented by the Eames Plastic Side Chair without armrests.



## Charles & Ray Eames

Charles and Ray Eames are counted among the most important figures of twentieth-century design. Their work spans the fields of furniture design, filmmaking, photography and exhibition design. Vitra is the sole authorised manufacturer of Eames products for

Europe and the Middle East. When you own an Eames product made by Vitra, you know it is an original.

1	Eames Plastic Armchair
2-8	Areas of use
9	Cover materials

10-11	Eames Plastic Chair – Colours
12-13	Eames Plastic Chair – Bases
14-15	Dimensions

16	Surfaces and colours
----	----------------------



## Dining at home – or eating out

With their new seat height, the Eames Plastic Chairs are even better suited for use in combination with contemporary dining tables. At home as well as in restaurants and cafeterias, the many configuration options make it possible to find just the right chair for any furnishing scheme or interior environment.

### Materials DAW

- **Base:** solid maple, stained and lacquered finish. Steel rod cross struts in basic dark. (DAW = Dining Height Armchair Wood Base)

### Materials DSW

- **Base:** non-stacking base with wood legs and steel rod cross struts in basic dark. (DSW = Dining Height Side Chair Wood Base)

### Materials DAR

- **Base:** wire base with cross struts, chrome-plated or powder-coated finish. The powder-coated version is suitable for outdoor use. (DAR = Dining Height Armchair Rod Base)

### Materials DSR

- **Base:** non-stacking four-legged wire base with cross struts. The powder-coated version is suitable for outdoor use. (DSR = Dining Height Side Chair Rod Base)

### Materials DAX

- **Base:** four-legged tubular steel base, chrome-plated or powder-coated in basic dark. The powder-coated version is suitable for outdoor use. (DAX = Dining Height Armchair X-Base)

### Materials DSX

- **Base:** non-stacking four-legged tubular steel base. The powder-coated version is suitable for outdoor use. (DSX = Dining Height Side Chair X-Base)
- **Note:** special additives retard the fading of colours due to UV radiation. However, if the chair is exposed to sunlight for prolonged periods, the colour may change over time. We recommend limited exposure to sunlight.



DAW



DSW



DAR



DSR



DAX



DSX



## Outdoor

Versions of the Eames Plastic Chair with non-upholstered seat shells and powder-coated bases are also suited for use in outdoor settings. They not only provide a striking visual accent on terraces and balconies but also make it possible to enjoy the chair's exceptional comfort under the open sky.

### Materials DAR

- **Base:** wire base with cross struts, chrome-plated or powder-coated finish. The powder-coated version is suitable for outdoor use. (DAR = Dining Height Armchair Rod Base)

### Materials DSR

- **Base:** non-stacking four-legged wire base with cross struts. The powder-coated version is suitable for outdoor use. (DSR = Dining Height Side Chair Rod Base)

### Materials DAX

- **Base:** four-legged tubular steel base, chrome-plated or powder-coated in basic dark. The powder-coated version is suitable for outdoor use. (DAX = Dining Height Armchair X-Base)

### Materials DSX

- **Base:** non-stacking four-legged tubular steel base. The powder-coated version is suitable for outdoor use. (DSX = Dining Height Side Chair X-Base)
- **Note:** special additives retard the fading of colours due to UV radiation. However, if the chair is exposed to sunlight for prolonged periods, the colour may change over time. We recommend limited exposure to sunlight.



DSR



DAR



DSX



DAX



**Living**

The rocking chair RAR (Rocking Armchair Rod Base) and the elegant DAL (Dining Armchair La Fonda Base) are expressive solitary pieces that cut a fine figure in a wide range of interior environments.

**Materials RAR**

- **RAR base:** chrome-plated wire base with cross struts, solid maple rockers, stained and lacquered finish. (RAR = Rocking Armchair Rod Base)

**Materials DAL**

- **Base:** La Fonda base in polished die-cast aluminium. (DAL = Dining Height Armchair La Fonda Base)



RAR



DAL



## Home office and studio

The PACC and PSCC versions feature a height-adjustable five-star base on castors with both spring and swivel functions. The chairs offer pleasant comfort in office environments where work tasks require shorter periods of sitting.

## Materials PACC

- **Base:** five-star base in polished die-cast aluminium with double castors in basic dark. (PACC = Pivot Armchair Cast Base on Castors)

## Materials PSCC

- **Base:** five-star base in polished die-cast aluminium with double castors in basic dark. (PSCC = Pivot Side Chair Cast Base on Castors)



PACC

PSCC



## Multipurpose seating

As flexible seating solutions in auditoriums, conference facilities, media rooms, assembly halls and similar spaces, the Eames Plastic Chairs have proven their worth over decades of use: the models DSS and DSS-N can be stacked, and DSS can also be linked in rows.

## Materials DSS

- **Base:** chrome-plated tubular steel base, DSS with ganging bracket. (DSS = Dining Height Side Chair Stacking Base)
- **Stacking:** up to 14 chairs can be stacked on the floor or on a stacking trolley. Version with full upholstery: up to 4 chairs can be stacked on the floor, up to 10 chairs on a stacking trolley.

## Materials DSS-N

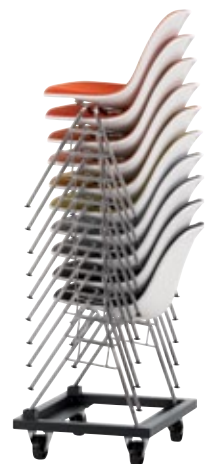
- **Base:** chrome-plated tubular steel base, DSS-N without ganging brackets. (DSS-N = Dining Height Side Chair Stacking Base Non-Link)
- **Stacking:** up to 14 chairs can be stacked on the floor or on a stacking trolley. Version with full upholstery: up to 4 chairs can be stacked on the floor, up to 10 chairs on a stacking trolley.



DSS-N



DSS, row with ganging brackets



Stacking trolley

**Stacking trolley**

The practical stacking trolley facilitates the quick set-up and storage of chairs used for temporary functions.

**Ganging brackets**

With the ganging brackets, the chairs can be easily hooked together to keep them in their intended place.

**Row and seat numbers**

The models DSS and DSS-N can be labelled with a row number as well as a seat number.





## Waiting areas

Beam supports in different lengths are available for the Eames Plastic Chairs, accommodating two to five seat shells. Thanks to the robust seat shells and the indestructible base construction, these configurations are suited for all types of waiting areas including those subject to intense use.

## Materials Eames Plastic Chair on beam

- **Table unit:** black solid core material (560 x 430 mm).
- **Base:** two-legged beam support in different lengths accommodates 2 to 5 chair shells or table units. T-beam: epoxy-coated in basic dark, polished aluminium legs. Fitted with plastic glides for carpet or anti-skid felt glides for hard floors.



Eames Plastic Side Chair on beam



Eames Plastic Armchair on beam

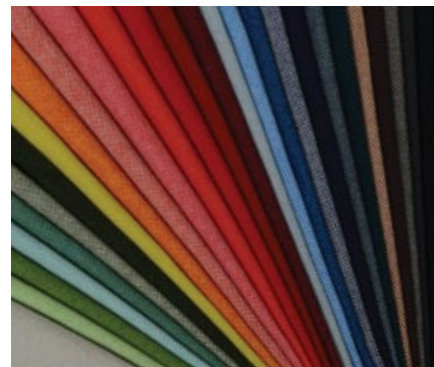




### Hopsak

100 % polyamide | 550 g/m<sup>2</sup>

Hopsak is an expressive flat-woven textile made of polyamide. The duotone colours offer a multitude of design possibilities in high-contrast, brightly hued or subtle combinations of warp and weft threads. Hopsak is a durable and robust fabric that can be used in private interiors as well as public areas. It is available in 28 different colours.



## CARE INSTRUCTIONS

### Cover fabrics

To care for cover fabrics, vacuum regularly with an upholstery nozzle to remove dust and lint. Fresh spots and spills can usually be removed by blotting immediately with an absorbent, lint-free sponge or cloth. To prevent remaining traces of a ring mark, work from the edge of the spot towards the centre.

To avoid mineral residue from remaining on dark fabrics after drying, we recommend the use of household-grade distilled water for dampening. Stubborn stains can be treated by brushing dry stains lightly with a soft brush (for example, a clothes brush). Depending on the type of stain, the use of solvents may be necessary. In such cases, it is essential to consult a professional cleaner. Under no circumstances should cover fabrics be rubbed vigorously. Please be sure to consult a specialist before using any solvent-based cleaning product.

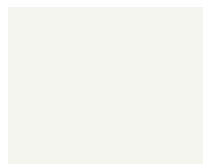
### Plastics

Vitra plastics are very robust, with excellent shape retention and colourfastness, making them resistant to a variety of chemicals and other substances. Furthermore, special additives retard the fading of colours due to UV radiation. However, the exposure of a chair to sunlight for prolonged periods may cause the colour to change over time. For this reason, limited exposure to sunlight is advisable. Please use a soft, damp, non-abrasive cloth to clean plastic surfaces and dry gently. For stain removal, we recommend the use of a mild, commercially available cleaning agent. Always avoid abrasive cleaning agents including powders and pastes as well as aggressive 'all-purpose' cleaners containing alcohol, which will damage the surface.

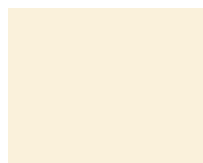


In collaboration with the Dutch designer Hella Jongerius, Vitra has developed a broad palette of colours for seat shells and upholstery materials, allowing an endless number of combinations to suit any interior.

**Shell colours**



**04**  
white



**30**  
cream



**23**  
ice grey



**94**  
moss grey



**73**  
navy blue



**21**  
ocean



**Suggested upholstery colours**



**74**  
dark blue/ivory



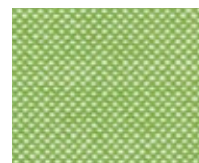
**88**  
cognac/ivory



**72**  
yellow/poppy red



**79**  
warmgrey/ivory



**69**  
grass-green/ivory



**81**  
ice blue/ivory



**82**  
ice blue/moor brown



**87**  
ivory/forest



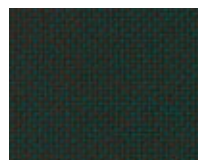
**70**  
grass-green/forest



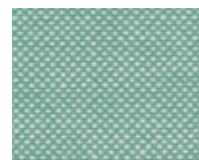
**84**  
blue/moor brown



**83**  
blue/ivory



**73**  
petrol/moor brown



**85**  
mint/ivory

Shell colours



**93**  
classic green



**34**  
mustard



**03**  
red (poppy red)



**28**  
classic red



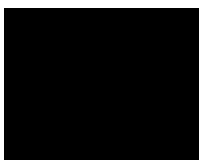
**89**  
oxide red



**25**  
mauve grey



**35**  
basalt



**01**  
basic dark



Suggested upholstery colours



**86**  
mint/forest



**70**  
grass-green/forest



**69**  
grass-green/ivory



**71**  
yellow/pastel green



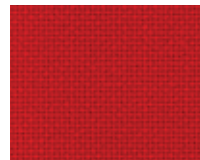
**65**  
coral/poppy red



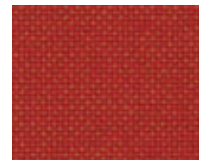
**68**  
pink/poppy red



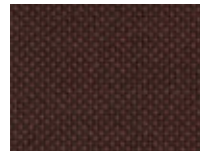
**67**  
poppy red/ivory



**63**  
red/poppy red



**96**  
red/cognac



**76**  
marron/moor brown



**62**  
red/moor brown



**80**  
warmgrey/moor brown



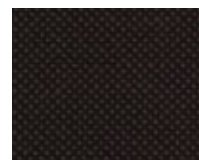
**05**  
dark grey



**75**  
dark blue/moor brown



**66**  
nero



**78**  
nero/moor brown



**77**  
nero/forest



DAR & DSR

---



DAW & DSW

---



DAX & DSX

---

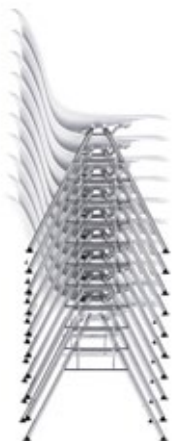


DAL

RAR

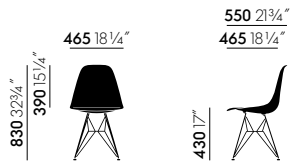


PSCC & PACC



DSS & DSS-N

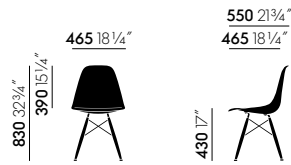
Eames Plastic Chair on beam



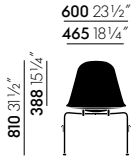
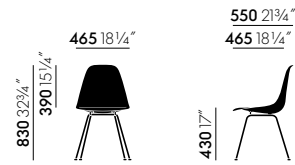
DSR



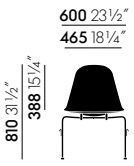
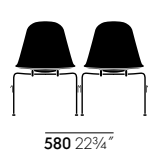
DSW



DSX



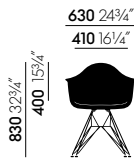
DSS



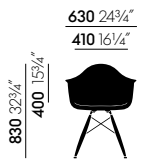
DSS-N



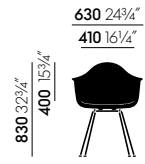
PSCC



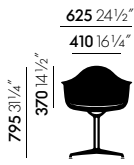
DAR



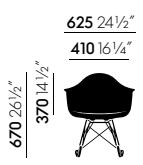
DAW



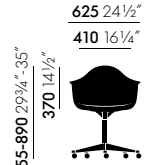
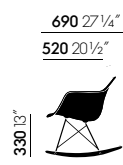
DAX



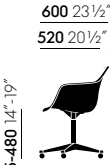
DAL

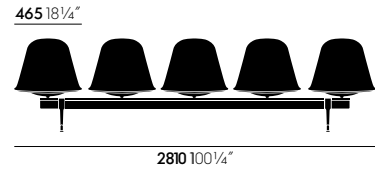
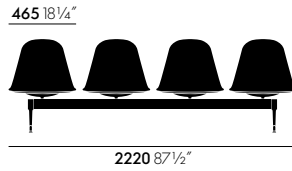
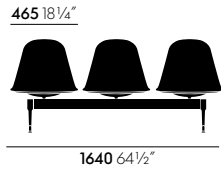
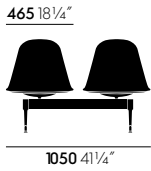
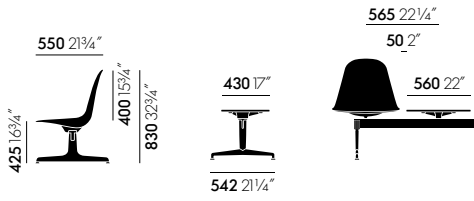


RAR

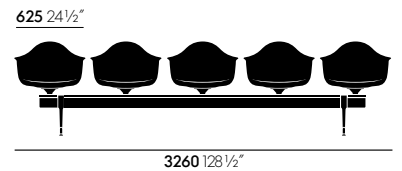
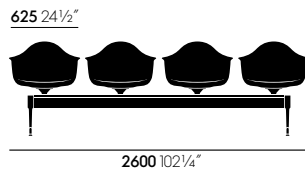
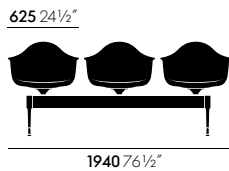
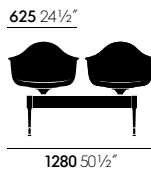
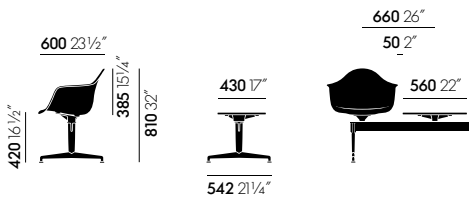


PACC





Eames Plastic Side Chair on beam



Eames Plastic Armchair on beam

**SURFACES AND COLOURS**



**Hopsak**

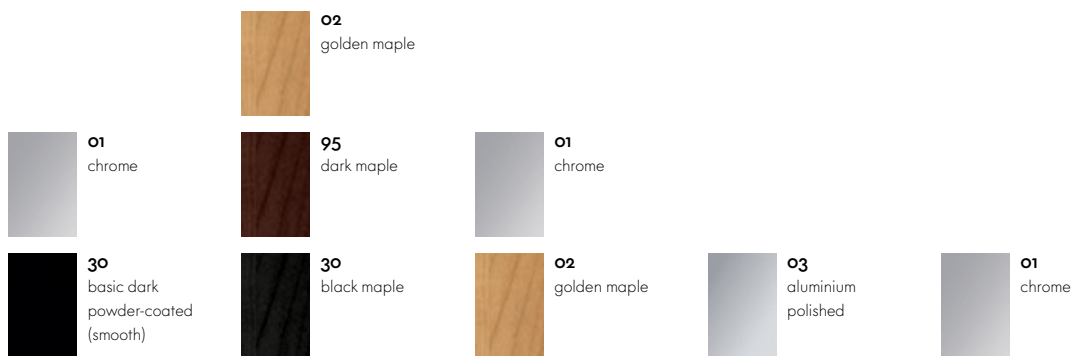


**Hopsak**

**Seat shell**

**Piping**

**BASES**



DAR, DAX, DSR, DSX

DAW, DSX

RAR

DAL, PACC, PSCC

DSS, DSS-N

