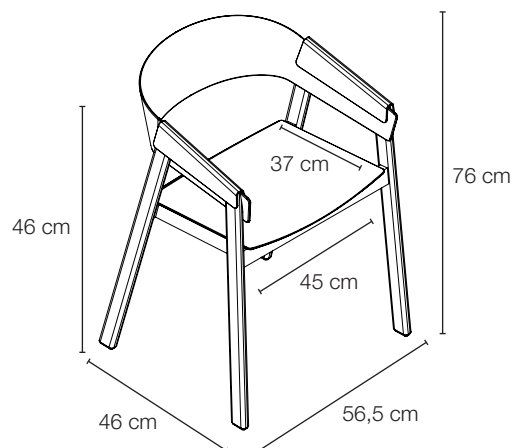


# PRODUCT FACT SHEET

## COVER CHAIR FURNITURE / LIGHTING / ACCESSORIES

**Thomas Bentzen on the design** "Cover is born from a desire to create a comfortable and contemporary armchair in wood. I aimed for a crisp and vivid expression in the plywood while looking for a solid and grounded look in the frame and base of the chair. Three years of play and hard work in the making has resulted in a light, yet strong armchair, playing and taking the molded veneer to its extreme."

PROCESS	The Cover chair is made from all wood and no metal. The wood is folded over the chairs legs and back rest. This technical innovation of the wood layering locks the chair together. Upholstered versions with textiles from Kvadrat or silk leather from Camo leathers.
DESIGNED BY / YEAR OF DESIGN	Thomas Bentzen / 2013
TYPE	Chair with armrest
DESCRIPTION	Chair for private or professional interiors available in a range of colours and upholstery. Available with or without upholstered seat.
ENVIRONMENT	Indoor
DIMENSIONS (CM)	Height: 76      Seat height: 46      Armrest height: 69 Width: 56,5      Seat width: 45 Depth: 46      Seat depth: 37
MATERIAL	All wood: PU lacquered oak. Form-pressed wood veneer shell. Coloured version: seat and shell is made from ash, while frame and legs are made of solid beech wood. Textiles from Kvadrat and leather from Camo leathers.
COLOUR	Wood seat: black, grey, anthracite, red, green and oak.
STANDARD UPHOLSTERIES	Textile: Black/Remix 183, Anthracite/Remix 173, Grey/Remix 123, Red/Remix 643, Green/Remix 933, Oak/Remix 252 Leather: Black/Black Silk leather, Oak/Cognac Silk leather.
CLEANING INSTRUCTIONS	Use moist cloth first and wipe off excess liquid with dry cloth. For upholstery versions, please find specific cleaning instructions for your chosen textile at <a href="http://www.kvadrat.dk">www.kvadrat.dk</a> or for leather at <a href="http://www.ca-mo.com">www.ca-mo.com</a>
TESTS & CERTIFICATIONS	Danish Technological Institute - EN 16139:2013. Tested to withstand L1: General use. Tested to withstand use in both short and longer periods of time, as well as use with both light and heavy loads on the furniture. i.e. Office buildings, educational institutes, showrooms, restaurants & public areas.
SPARE PARTS	Comes with standard glides. Optional glides with felt can be purchased separately.
ABOUT THE DESIGNER	Thomas Bentzen is a former designer at Louise Campell Studio and started his own studio in 2010. He is co-founder of the design collective REMOVE and his products have received International recognition at fairs and exhibitions all over the world.



# PRODUCT FACT SHEET

## COVER CHAIR FURNITURE / LIGHTING / ACCESSORIES

**Standard colours & textiles** Other colours or Steelcut Trio textiles are available at a 5% extra cost. Other textiles available upon request.

### WOOD SEAT



Black



Grey



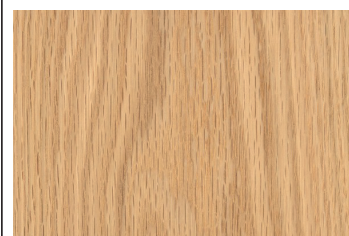
Red



Anthracite

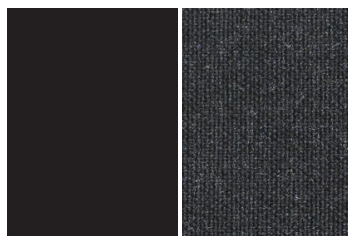


Green



Oak

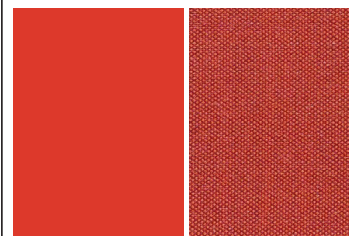
### UPHOLSTERED SEAT



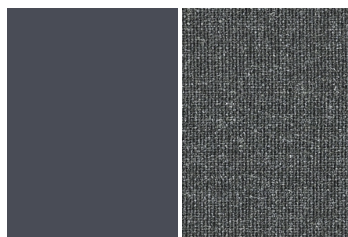
Black/Remix 183



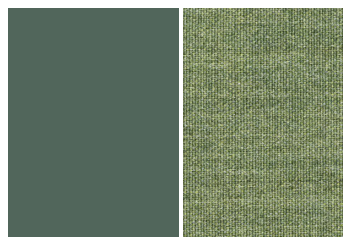
Grey/Remix 123



Red/Remix 643



Anthracite/Remix 173

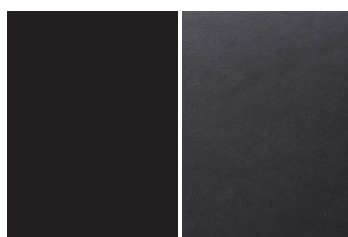


Green/Remix 933



Oak/Remix 252

### LEATHER SEAT



Black/ Black Silk leather



Oak/ Cognac Silk leather